

Tools needed to open a Bottom Drop Tee

for cleaning, operating and gasket maintenance.

The competition's Tee



In addition, make sure you have plenty of time and patience.

B.T.I.'s Siphon Flow Tee



Previous Design Bottom Drop Tee

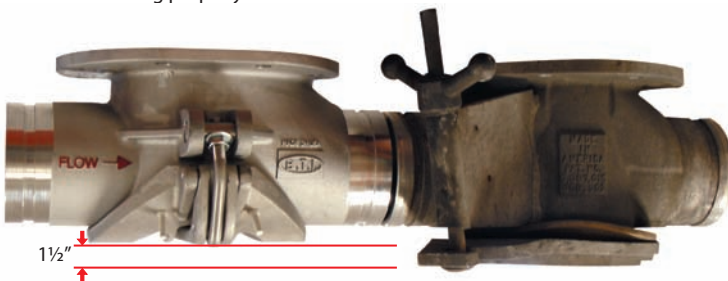


Seized wing nuts and galled bolts that will not operate make simple maintenance and gasket replacement difficult if not impossible.



Previous bottom drop tees were difficult to close properly. Equal pressure had to be maintained to each wing nut or bolt to achieve a secure seal. With the Siphon Flow Bottom Drop Tee there's no more adjusting the door to get it to seal properly.

Due to uneven pressure during assembly gaskets become mis-aligned and damaged causing product leakage. Notice how the gasket at top has been torn and is not sealing properly.



Siphon Flow Bottom Drop Tees have more ground clearance than any other tee on the market with 1 1/2 inches more on standard tees and 1/2 inch more than the low profile models currently available. Siphon Flow Aluminum Bottom Drop Tees are lighter weight – up to 40% - yes over 7 pounds lighter, than other aluminum Bottom Drop Tees on the market today.

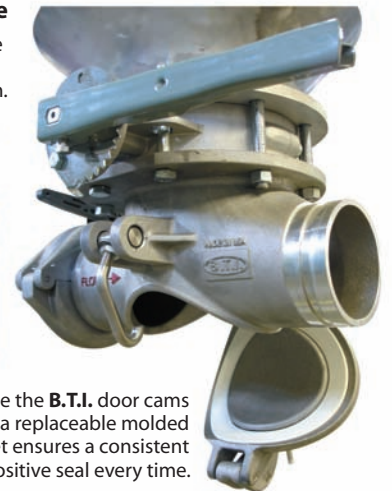
Hands down. It just doesn't get any easier.

B.T.I.'s Siphon Flow Bottom Drop Tee

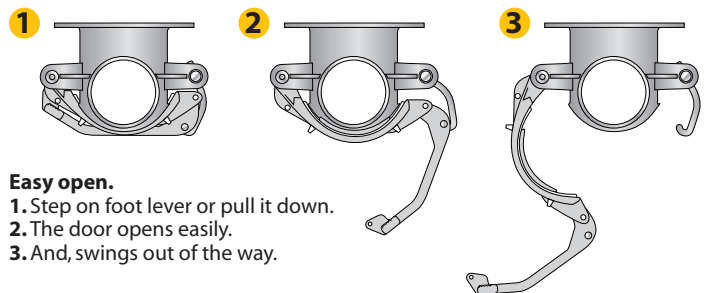
All Siphon Flow Bottom Drop Tees have special polymer bushings at all pivot points to assure years of easy operation.



Above, actual tee that has been in service for one year and still opens with one hand.



Once the B.T.I. door cams shut, a replaceable molded gasket ensures a consistent positive seal every time.



Easy open.

1. Step on foot lever or pull it down.
2. The door opens easily.
3. And, swings out of the way.

400 Parkway Drive • Park Hills, MO 63601
573-518-0600 • Fax: 573-518-0551
©2008 Bulk Tank, Inc. • U.S. Patents Pending



1-800-841-5524 • www.bulktankinc.com