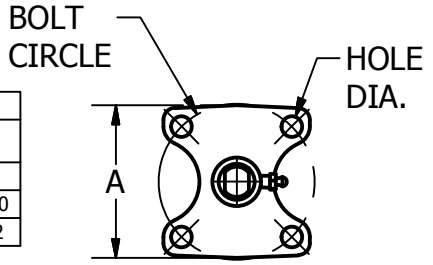


Weight in Pounds				
3"	4"	5"	6"	8"
2.4	4.2	5.5	7.0	15.0

Top Plate Drilling					
SIZE	3"	4"	5"	6"	8"
No. Holes	4	4	4	4	4
Bolt Circle	3.250	3.250	3.250	3.250	5.000
Hole Dia.	.438	.438	.438	.438	.562



Wafer Bolt Circle Data				
SIZE	Pattern	Bolt Circle	# Holes	Hole Ø
3"	TTMA	4.875	6	.438
	TTMA	4.875	8	.438
4"	ANSI	6.000	4	.688
	TTMA	5.875	8	.438
5"	TTMA	7.000	6	.562
	ANSI	7.500	8	.688
6"	TTMA	7.875	6	.562
	ANSI	8.500	8	.812
8"	TTMA	9.000	8	.562
	ANSI	9.500	8	.812
8"	TTMA	11.625	8	.688
	ANSI	11.750	8	.812

VALVE SIZE					
	3"	4"	5"	6"	8"
A	3.180	3.180	3.180	3.180	4.910
B	.438	.500	.500	.500	.625
C	1.750	2.000	2.125	2.125	2.500
D	.625	.750	.750	.750	.875
E	1.250	1.250	1.250	1.250	1.250
F	4.875	6.000	6.000	6.500	8.313
G	2.875	3.875	5.000	6.000	8.000
H	3.125	4.125	5.188	6.125	8.125
J	4.390	5.710	7.030	8.150	10.380

Parts	
ITEM	Description
1	Extension O-ring
2	Composite Bushing
3	Top Stem
4	Neck Extension
5	Grease Fitting
6	Top O-ring
7	Bottom O-ring
8	Body
9	Retaining Pin
10	Seat
11	Disc
12	Bottom Stem
13	Bottom Bushing
14	Bottom Stem Plug

GENERAL NOTES:
 C = INSTALLED WIDTH
 G = MINIMUM ALLOWABLE INSIDE DIA. OF PIPE OR MATING FLANGE

BODIES HAVE AS STANDARD ALL T.T.M.A. AND A.N.S.I. DRILL PATTERNS

BULK TANK, INC.
 400 PARKWAY DRIVE
 PARK HILLS, MO 63601



DESCRIPTION
 BTI Butterfly Valves

PART NO. _____ MATL. _____

DRAWN BY P. Kemp SCALE _____ SHEET 1 of 1

ENGINEER P. Kemp DATE 5/27/2011

2

1

2

1