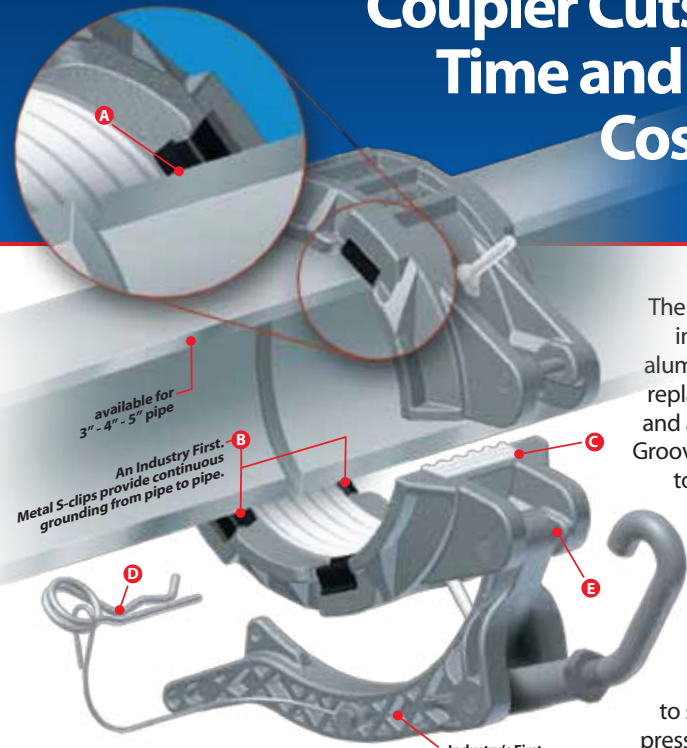


# It's the only coupler you'll ever need.

**B.T.I.'s All-in-One Coupler Cuts Cleaning Time and Inventory Costs by 66%**



The All-in-One Coupler is the industry's first lightweight aluminum die-cast coupler. It replaces all traditional plastic and aluminum coupler types: Grooved to Grooved, Grooved to Plain, and Plain to Plain.

**A** The revolutionary All-in-One design incorporates eight S-clip gripper locations that "bite" into the pipe as air pressure increases and the pipes attempt to separate. The greater the pressure, the greater the grip, regardless of the type of pipe.

**B** The metal s-clip design also provides continuous grounding from pipe to pipe; no need to attach grounding straps or ground wires to connecting pipes.

All-in-One Couplers are positioned to grip whether they are used on plain or grooved pipes and eliminates the need to groove pipes or tees, reducing part costs.

The coupler offers two gasket configurations; split or solid, two closure options; Cam Handle or a Bolt On Tee Handle and is available in 3, 4 and 5 inch sizes. The exclusive hinge design matches the curve of the gasket and is moved closer to the inside body to eliminate pinching of the gasket as in previous design couplers.

**C** The coupler's split gasket option, that seals the first time and every time it's installed, eliminates the hassle of getting the gasket on and off while pull tabs keep the gasket in position during installation, ensuring a secure seal. Suspended in the gasket material is an FDA-approved lubricant that eliminates the need for additional lubrication. **D** An exclusive safety lock and pin prevents the coupler from opening while under pressure, **E** while polymer bushings at all pivot points eliminate galling and seizing. Cleaning time and expense are now drastically reduced --simply align the pipes and quickly and easily slip on B.T.I.'s All-in-One Coupler.

**Even though the innovative design of B.T.I.'s All-in-One Coupler far exceeds any existing model, the cost compares with traditional couplers.**

## 2 Closure Configurations



All closure configurations available in 3" - 4" - 5" sizes

Announcing a new spin on an old concept...

## SpinFlow AERATION SYSTEM



Available in White or Blue Food Grade Silicone Rubber

## SpinFlow AERATION SYSTEM

The faster you can unload your hopper, the more money you save, and the more loads you can haul. Bulk Tank's innovatively designed components increase pressure, velocity, and energy during aeration, allowing faster unloading. That's why Bulk Tank's new SpinFlow aerators reduce unloading times up to 20%. Frustrating problems such as back flushing and rat holing of difficult material are no match for SpinFlow's helical symmetrical designed

aerator stem. Engineered for a positive shut-off on the hopper wall, back flush is effectively prevented, every time. The aerator rubber is designed to eliminate contamination, last longer, and will not prematurely fail due to cracking and splitting. No need to waste money on replacement parts. Faster, stronger, and more economical, the SpinFlow aerator is putting a new spin on an old stand-by.

Our SpinFlow™ Aerator rubbers are just another way that B.T.I. products fulfill our brand promise - Lasts Longer. Works Better. Costs Less. **We're so sure that it's the best value on the market we guarantee them for 2 1/2 years or 2500 loads.**

## Finally, a Dry Bulk Filter Screen that doesn't restrict flow.

## B.T.I.'s Pneumatic Conveying Filter Screen



Aluminum Quick Coupler for easy cleaning  
Screen Holes available in 1/4", 3/8" and 1/2" sizes

By utilizing a 6-inch filter screen B.T.I. has increased the open area by 40%. This means the filter screen will not restrict flow. The B.T.I. Pneumatic Conveying Filter Screen is more compact than other models on the market today and the housings are one piece cast aluminum, making the assembly lighter and stronger. The aluminum quick coupler makes cleaning quick and simple. With our unique gasket that features a molded-in filter screen, the assembly will not operate properly if the screen is removed; the coupler will simply not hold pressure, ensuring the filter will always be used.



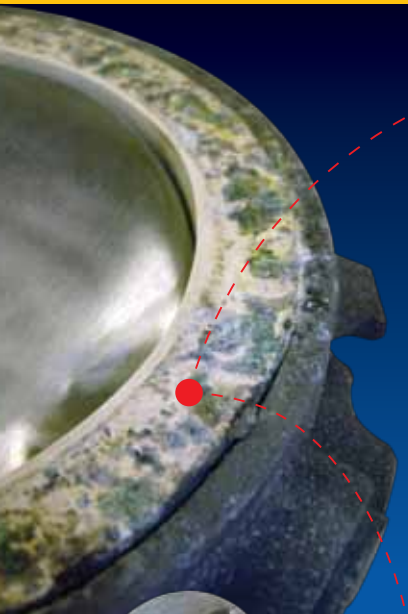
Bulk Tank, Inc. • 400 Parkway Drive • Park Hills, MO 63601  
1-800-841-5524 • (573)-518-0600 • Fax (573)-518-0551  
**Order online at [www.BulkTankInc.com](http://www.BulkTankInc.com)**



**Food Safety Management Systems For Dry Bulk Transportation**



**Lasts Longer. Works Better. Costs Less.**



Is your food grade pneumatic trailer really

# Food Grade?

## Open Up to an Easier Way to Clean.

### B.T.I.'s Easy Open Hopper Tee



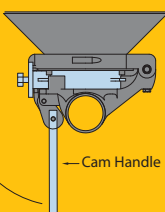
Eliminate the dangers of contamination with our new Easy Open Hopper Tee.



Above - Valve and Tee pulled from a "clean" pneumatic trailer. Mold, mildew and other harmful bacteria grow between the valve seat and hopper flange causing contamination of your food service equipment.

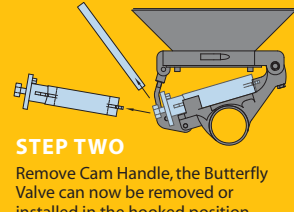
#### STEP ONE

Insert Cam Handle and rotate upward



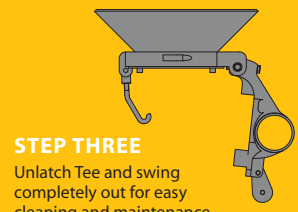
#### STEP TWO

Remove Cam Handle, the Butterfly Valve can now be removed or installed in the hooked position.



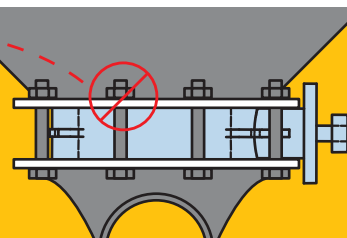
#### STEP THREE

Unlatch Tee and swing completely out for easy cleaning and maintenance.



### No Bolts about it.

You can easily remove the butterfly valve from the hopper tee for cleaning without cutting or removing bolts, saving time and money.



## Lighter, Easier to Operate, Performs Better and Costs Less—that's the trademark of a B.T.I. Product.

100% Manufactured and Assembled in the USA.

# MaxxLife

Transportation Butterfly Valves from **B.T.I.**

The only valve manufactured exclusively for the transportation industry to withstand the rigors of the road. We guarantee it.



## This is NOT your father's butterfly valve.

B.T.I.'s MaxxLife Transportation Butterfly Valve is the industry's first butterfly valve to use an all-in-one valve stem, available in sizes up to 36 inches. The MaxxLife Butterfly Valve offers the highest flow and the lightest, strongest body on the market today. The 1-piece direct drive stem-to-disc connection doesn't require any connecting adapters, welded parts or hardware as all other industry standard butterfly valves do.

The MaxxLife Butterfly Valve features an all-in-one, specially blended valve seat that can be used for all applications. The seat is made of an abrasion-resistant rubber that will not turn hard and cause valve failure, resisting temperature extremes from -40 to 300 degrees Fahrenheit. And, because the MaxxLife Butterfly Valve is **100% manufactured and assembled in the U.S.A.**, all components that make up the MaxxLife valve seat are in compliance with FDA standards for food products. All MaxxLife valve seats meet CFR117.2600.

### BTI guarantees this to be the longest lasting valve you have ever owned. Period.

The extendable neck of the MaxxLife Butterfly Valve is specifically designed for the pneumatic tank trailer industry, resulting in ease of use and eliminating the time and frustration incurred by operators trying to unload product with industrial valves adapted for use with pneumatic tank trailers.

B.T.I.'s MaxxLife Butterfly Valve will be available in 3, 4, 5, 6 and 8-inch sizes.

#### WEIGHT COMPARISONS

Bare stem valve weights

Valve Size	BTI MaxxLife	Competition
3"	2.50	4
4"	4.25	7
5"	5.55	8
6"	7.01	9
8"	X.XX	X

#### COMPARISON OF NECK EXTENSION WEIGHTS

BTI MaxxLife		
0.276 lbs./inch	36" extension	10 lbs
Competition		
0.451 lbs./inch	36" extension	
plus 1.673 lbs fixed weight		18 lbs

See the MaxxLife Valve in action at [www.bulktankinc.com/video](http://www.bulktankinc.com/video)

# Spin into clean filtration—silently.

## BTI's New SpinFlow Filter System

It's unlike any pneumatic trailer air filter on the market.



Filter elements are interchangeable with Sure Seal, Pneu Clean and ZC units.



Single cam lever lid and removable lid gasket. Seal tab holes are in cam and lid for tamper-proof operation.

The new B.T.I. SpinFlow Filter System has a silencer built into the air inlet casting of the unit. The unique design of the air inlet chamber casting performs as a silencing and dampening system. This chamber reduces blower noise compared to existing systems on the market today. As air enters the filtration system, this unique design reduces back pressure, which equals a reduction in heat build up.

**The silencer is built in at no additional cost to you!**

The unit starts to spin the air as it enters the air inlet. The air is directed up the housing, utilizing the complete filter element smoothly and evenly with less back pressure and pressure drop, saving you money by making your elements last longer than any unit on the market. The SpinFlow assembly uses a single cam lever lid, which requires fewer parts and fewer adjustments. The lid gasket is easily removable for cleaning purposes. Seal tab holes are in the cam and lid for tamper-proof operation.

**Never buy a filter and silencer separately again!**

