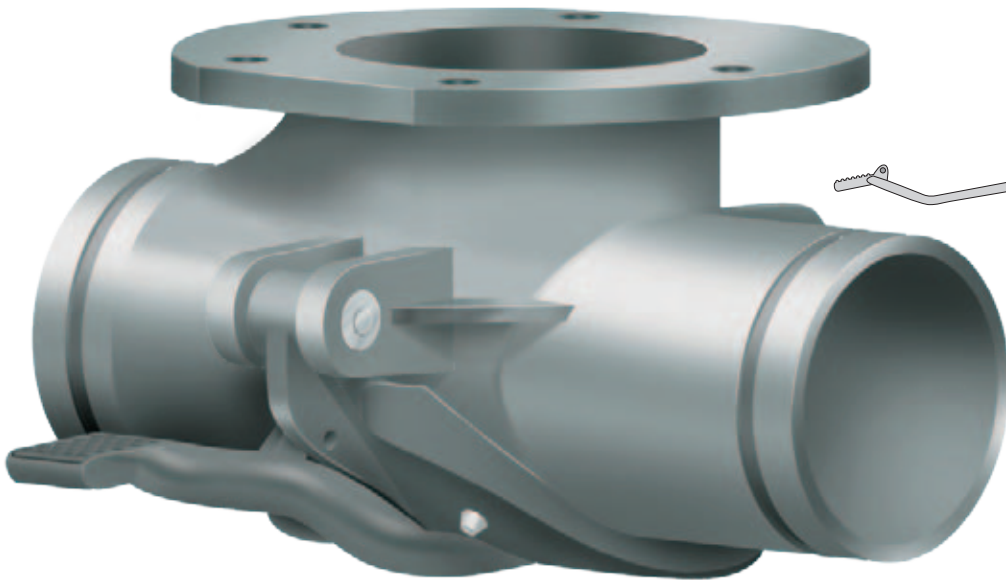
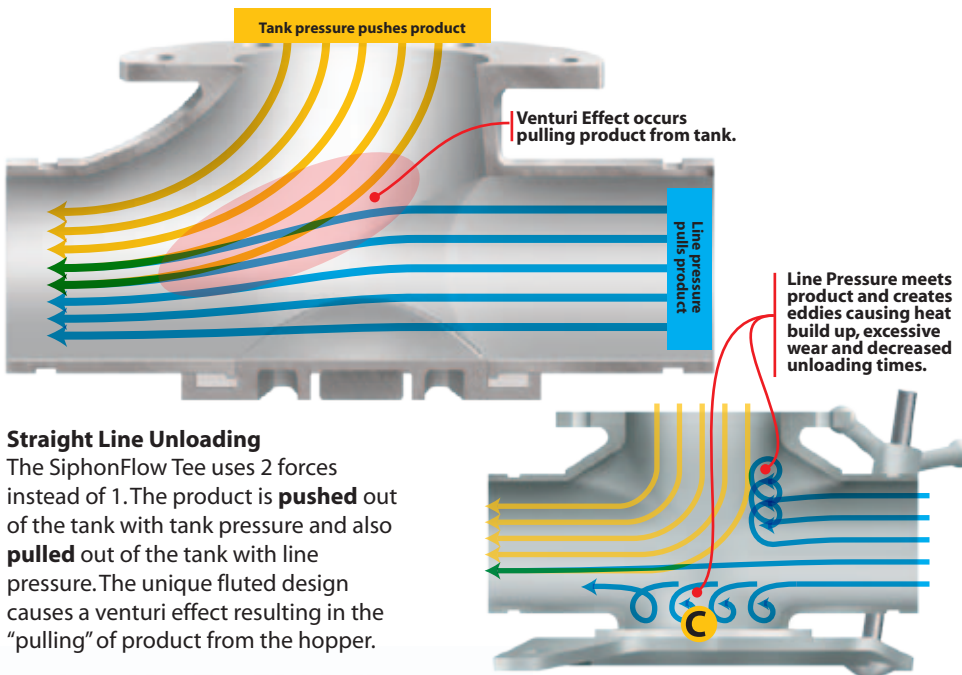


Hopper tees should empty material. Not fill you with frustration.

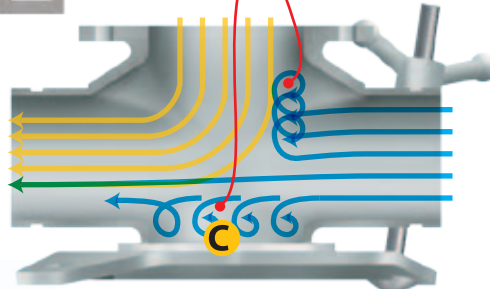


available in 5", 6", or 8" Aluminum or Abrasion Resistant Duralon™



Straight Line Unloading

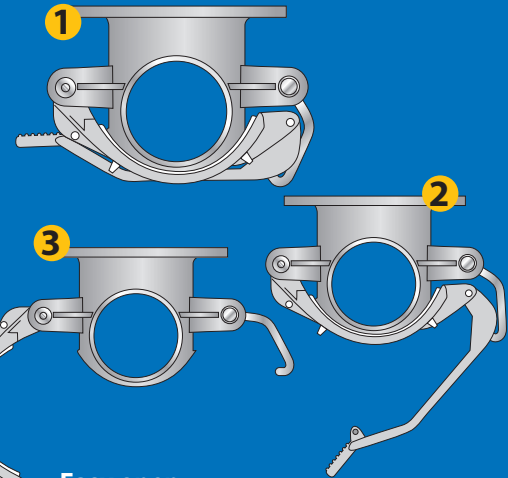
The SiphonFlow Tee uses 2 forces instead of 1. The product is **pushed** out of the tank with tank pressure and also **pulled** out of the tank with line pressure. The unique fluted design causes a venturi effect resulting in the "pulling" of product from the hopper.



Previous Design Bottom Drop Tee

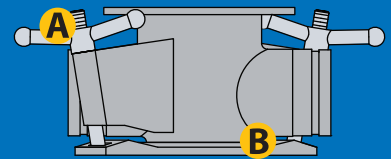


1-800-841-5524 • www.bulktankinc.com



Easy open.

1. Step on foot lever or pull it down.
2. The door opens easily.
3. And, swings out of the way.



Previous Design Bottom Drop Tee

- A** No more seized wing nuts and galled bolts that will not operate. All Siphon Flow Bottom Drop Tees have special polymer bushings at all pivot points to assure years of easy operation.
- B** Previous bottom drop tees were difficult to close properly. Equal pressure had to be maintained to each wing nut or bolt to achieve a secure seal. With the Siphon Flow Bottom Drop Tee there's no more adjusting the door to get it to seal properly. Once the door cams shut, a replaceable molded gasket ensures a consistent positive seal every time.
- C** Siphon Flow Bottom Drop Tees are smoother flowing. The I.D. of the Bottom Drop Door is the same radius as the bottom of the tee itself which prevents eddy currents that cause excessive wear and turbulence in the unload process.

Siphon Flow Bottom Drop Tees have more ground clearance than any other tee on the market with 1 1/2 inches more on standard tees and 1/2 inch more than the low profile models currently available. Siphon Flow Aluminum Bottom Drop Tees are lighter weight – up to 40% - yes over 7 pounds lighter, than other aluminum Bottom Drop Tees on the market today.

400 Parkway Drive • Park Hills, MO 63601
573-518-0600 • Fax: 573-518-0551

©2011 Bulk Tank, Inc.
U.S. Patented and Patents Pending