

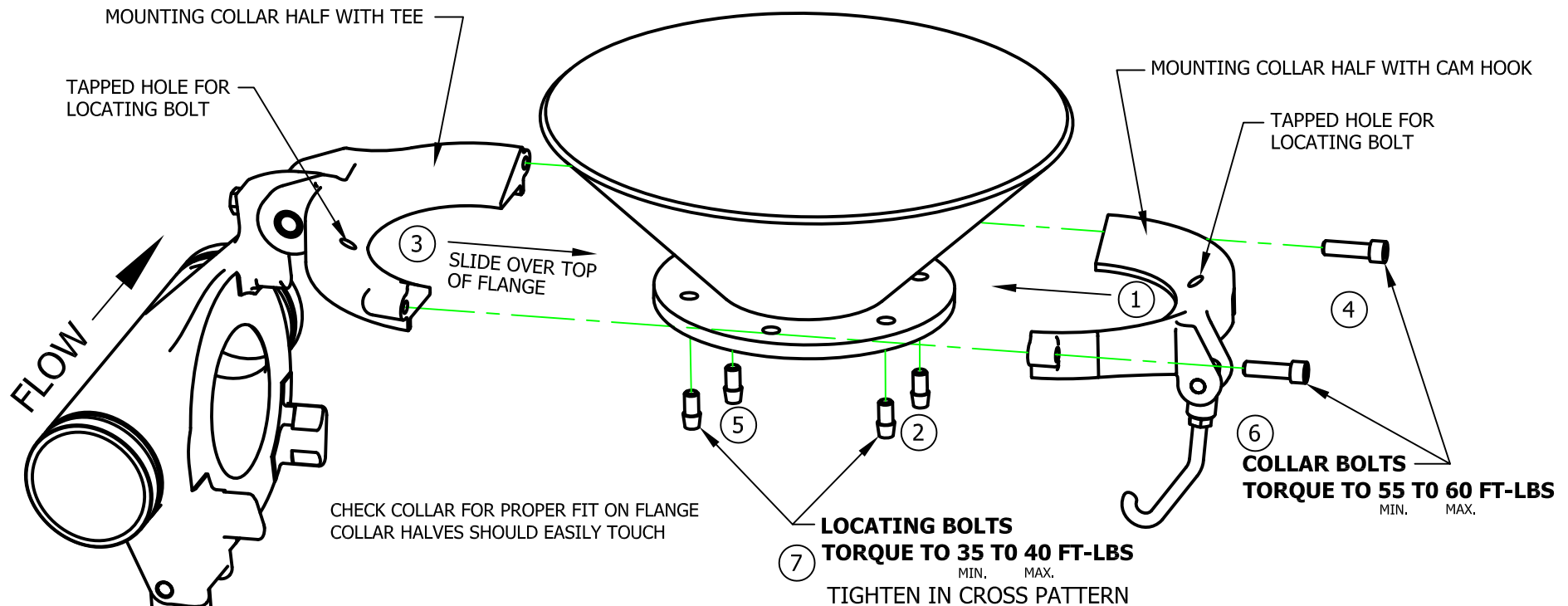
# 5" - 6" EASY OPEN TEE INSTALLATION

## TOOLS REQUIRED FOR INSTALLATION:

- \* 3/8" ALLEN WRENCH
- \* 2- 3/4" WRENCHES

## FOR PROPER OPERATION AND SEALING YOU MUST FOLLOW THESE GUIDE LINES:

- \* **INSPECT HOPPER FLANGE FOR WARPAGE AND EXCESSIVE WELD**
- 1. WARPED FLANGES MUST BE STRAIGHTENED OR REPLACED**
- 2. EXCESSIVE WELD MAY NEED GROUND AWAY FOR MTG. COLLAR CLEARANCE**
- \* CHECK FLANGE THICKNESS (EASY OPEN IS PRE-ADJUSTED FOR 3/8" THICK FLANGE)
- \* **CHECK BUTTERFLY VALVE TO BE USED (ONLY USE RAISED O-RING TYPE VALVE SEAT) (SQUARE SHOULDER TYPE VALVE SEAT IS NOT RECOMMENDED)**
- \*\***SPECIAL ORDER THE EASY OPEN TEE FOR KEYSTONE TYPE THICK BODIED VALVES**



STEP 1  
SLIDE MOUNTING COLLAR HALF W/HOOK OVER FLANGE

STEP 2  
HAND TIGHTEN 2 LOCATING BOLTS

STEP 3  
SLIDE MOUNTING COLLAR HALF W/TEE OVER FLANGE

STEP 4  
INSTALL COLLAR BOLTS AND HAND TIGHTEN

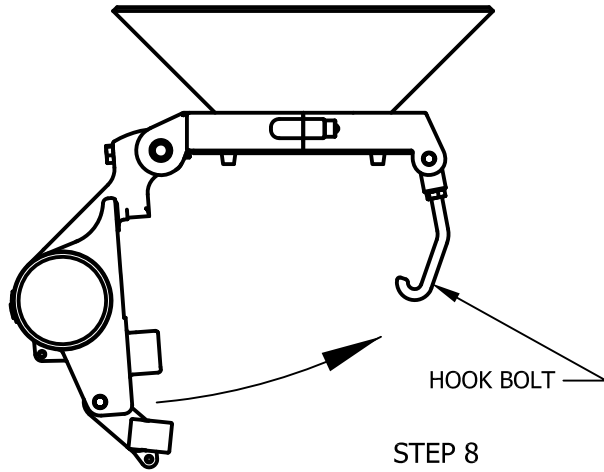
STEP 5  
HAND TIGHTEN 2 LOCATING BOLTS

STEP 6  
TORQUE COLLAR BOLTS TO 55-60 FT-LBS.

\* **MAKE SURE NOT TO FORCE COLLAR HALVES TOGETHER**

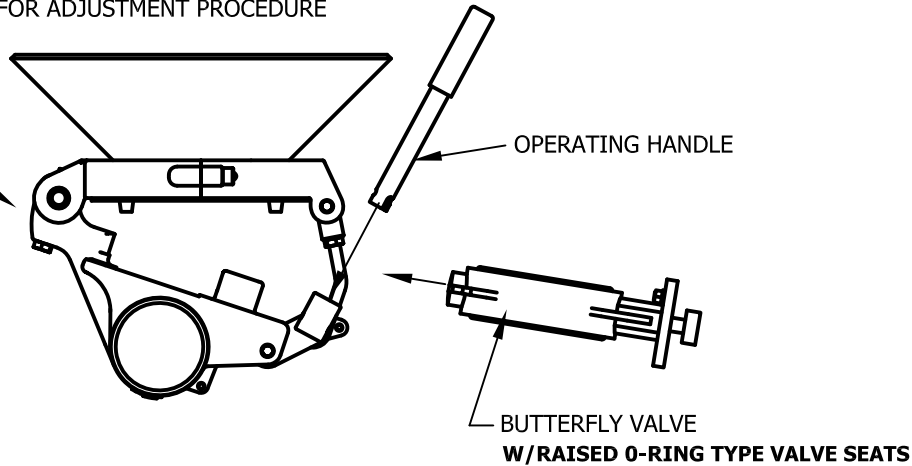
STEP 7  
TORQUE LOCATING BOLTS TO 35-40 FT-LBS IN CROSS PATTERN

# 5" - 6" EASY OPEN TEE INSTALLATION



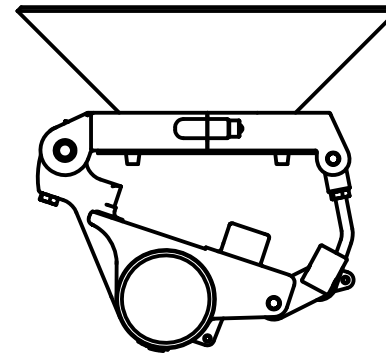
STEP 8  
SWING TEE UP THEN ENGAGE HOOK BOLT  
INTO THE CAM

NOTE:  
IF FLANGE THICKNESS IS NOT 3/8" THICK  
ADJUSTMENT WILL BE REQUIRED BEFORE  
VALVE CAN BE CAMMED INTO PLACE  
SEE SHEET 3 FOR ADJUSTMENT PROCEDURE



STEP 9  
PLACE BUTTERFLY VALVE INTO PLACE

STEP 10  
INSERT OPERATING HANDLE INTO CAM  
THEN ROTATE TO LOCK IN PLACE



STEP 11  
ROTATE HANDLE DOWN CAMMING INTO PLACE  
THEN REMOVE OPERATING HANDLE